

HF5 Fixture Kit Options

MICRO·VU

Small Kit

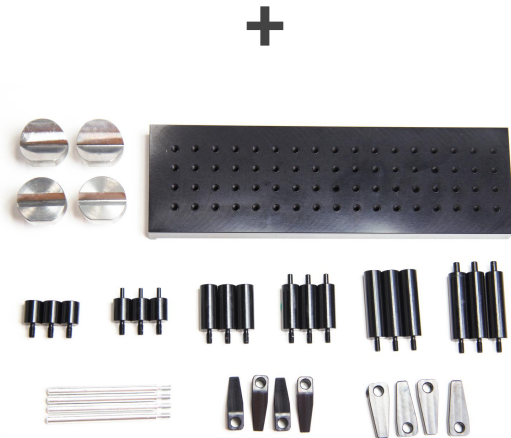
- 1 Reference Edge
- 1 Pair of Shaft Centers
- 2 Cone Tip Attachments
- 2 Internal Cone Tip Attachments
- 1 Screw Clamp
- 1 Screw Clamp Stop
- 1 Screw Clamp Bit Set W/ Case
- 1 V-Block and Clamp
- 10 Mounting Screws



Medium Kit

All components of Small Kit and additionally:

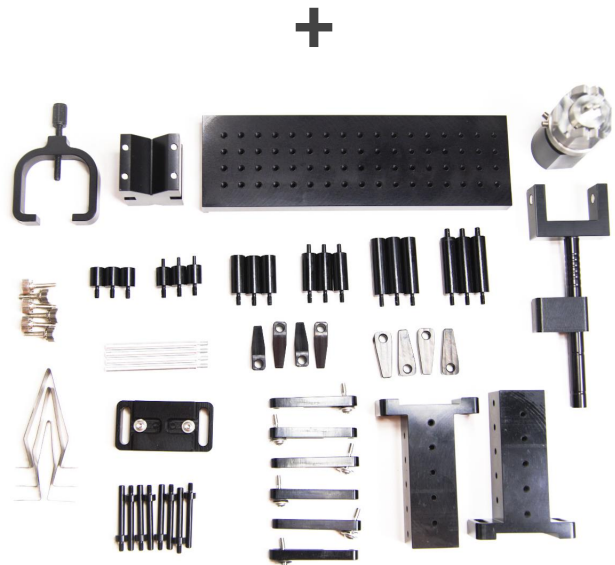
- + 1 Magnetic Base Plate
- + 2 Small V-Groove Attachments
- + 2 Large V-Groove Attachments
- + 18 Positioning Rods - two versions per length (3pcs x 2 versions x 3 lengths)
- + 4 Flexure Clamps



Large Kit

All components of Medium Kit and additionally:

- + 2 Tower Fixtures
- + 8 Locating Pins
- + 6 Tower Arms
- + 1 Upright Shaft Holder with three sized springs
- + 1 Screw Clamp
- + 1 Screw Clamp Stop
- + 1 V-Block and Clamp
- + 6 Mounting Screws
- + 1 Magnetic Base Plate
- + 18 Positioning Rods - two versions per length
- + 4 Flexure Clamps



Product information is subject to change without prior notice as a result of ongoing technical development.

www.microvu.com | 7909 Conde Lane. Windsor, California 95492

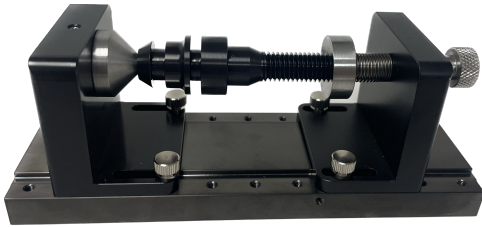
HF5 Fixturing Examples

MICRO·VU

Shaft centering fixture

Possible with all Fixture Kit Options

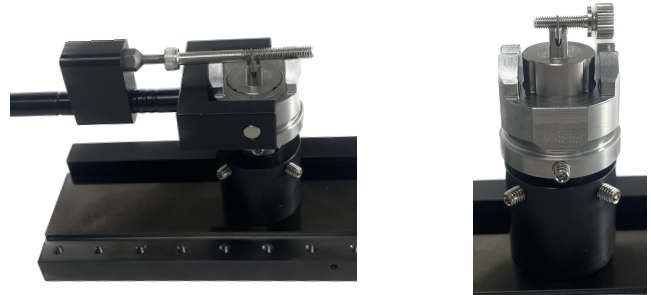
- 4 different magnetic tip attachments
- Spring loaded arm for easy loading



Screw Clamp

Possible with all Fixture Kit Options

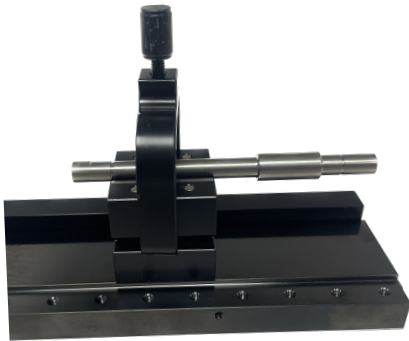
- Horizontal stop with hex bits
- 2 V-Groove housing sizes for small and large screws



V-Block and Clamp

Possible with all Fixture Kit Options

- Thumb screw for easy clamping
- Magnetic mounting



Upright Shaft Holder

Requires Large Fixture Kit

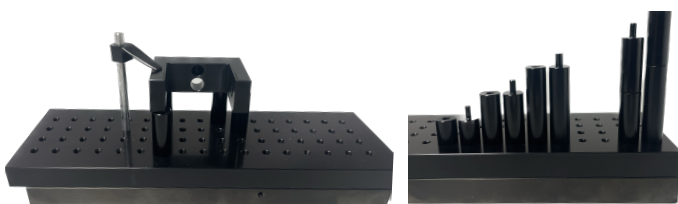
- Secure shafts upright
- 3 sized springs for large shaft diameter range



Base Plate

Requires Medium or Large Fixture Kit

- Magnetic for quick and easy loading onto stage
- 3 lengths, stackable rods, both with and without locating pins
- Flexure Clamp for securing parts



Tower Fixture

Requires Large Fixture Kit

- Spring loaded arms for easy positioning
- Locating pins for repeatable placement
- Compatible with flexure clamps



Product information is subject to change without prior notice as a result of ongoing technical development.

www.microvu.com | 7909 Conde Lane, Windsor, California 95492